

## **Panoptix LiveScope™ System Thru-Hull Mount**

**Garmin code: 010-02233-00**

### **In the box**

- LiveScope GLS 10 sonar black box
- Panoptix LVS32 transducer
- Thru-hull mount hardware
- Transom mount
- Power cable
- 2 meter Garmin marine network cable, small connector
- Network adapter cable
- Mounting hardware
- Documentation

### **Accessories**

- **Cables & Chargers**
  - Garmin marine network cables (small connectors), 6ft (straight)
  - Garmin marine network cables (small connectors), 20ft (straight)
  - Garmin marine network cables (small connectors), 40ft (straight)
  - Garmin marine network cables (small connectors), 50ft (right angle)
  - Cable coupler (Garmin marine network cables small connector)
  - Garmin marine network adapter cable, small (male) to large
  - Panoptix LiveScope™ Transducer Extension Cable (21-pin)
  - Split connectors (18mm)
- **Mounts**
  - Heavy duty transom mount with spray shield (4/8/12-pin transducers)



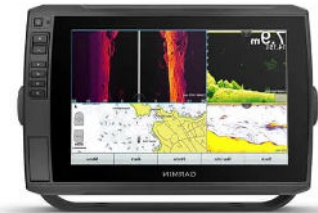
**ECHOMAP™ UHD 75cv**



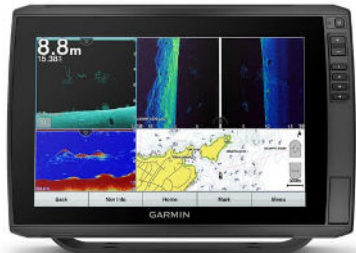
**ECHOMAP™ UHD 75sv**



**ECHOMAP™ UHD 95sv**



**ECHOMAP™ Ultra 105sv with  
GT56UHD-TM Transducer**



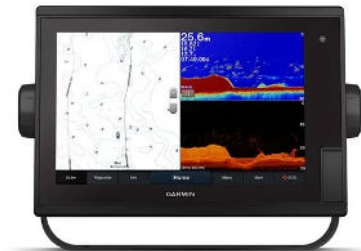
**ECHOMAP™ Ultra 125sv with  
GT56UHD-TM Transducer**



**GPSMAP® 1222xsv**



**GPSMAP® 1222xsv Plus**



**GPSMAP® 1222xsv Touch**



**GPSMAP® 1253xsv**



**GPSMAP® 7407xsv**



**GPSMAP® 752xs**



**GPSMAP® 752xs Plus**



**GPSMAP® 752xs Plus**



**GPSMAP® 753xsv**



**GPSMAP® 8410**



**GPSMAP® 8412**



**GPSMAP® 8416**



**GPSMAP® 952xs Plus**



**GPSMAP® 953xsv Plus**



**GPSMAP® 8700 Black Box**